

Briefing of Continental Teves Demonstration on B45

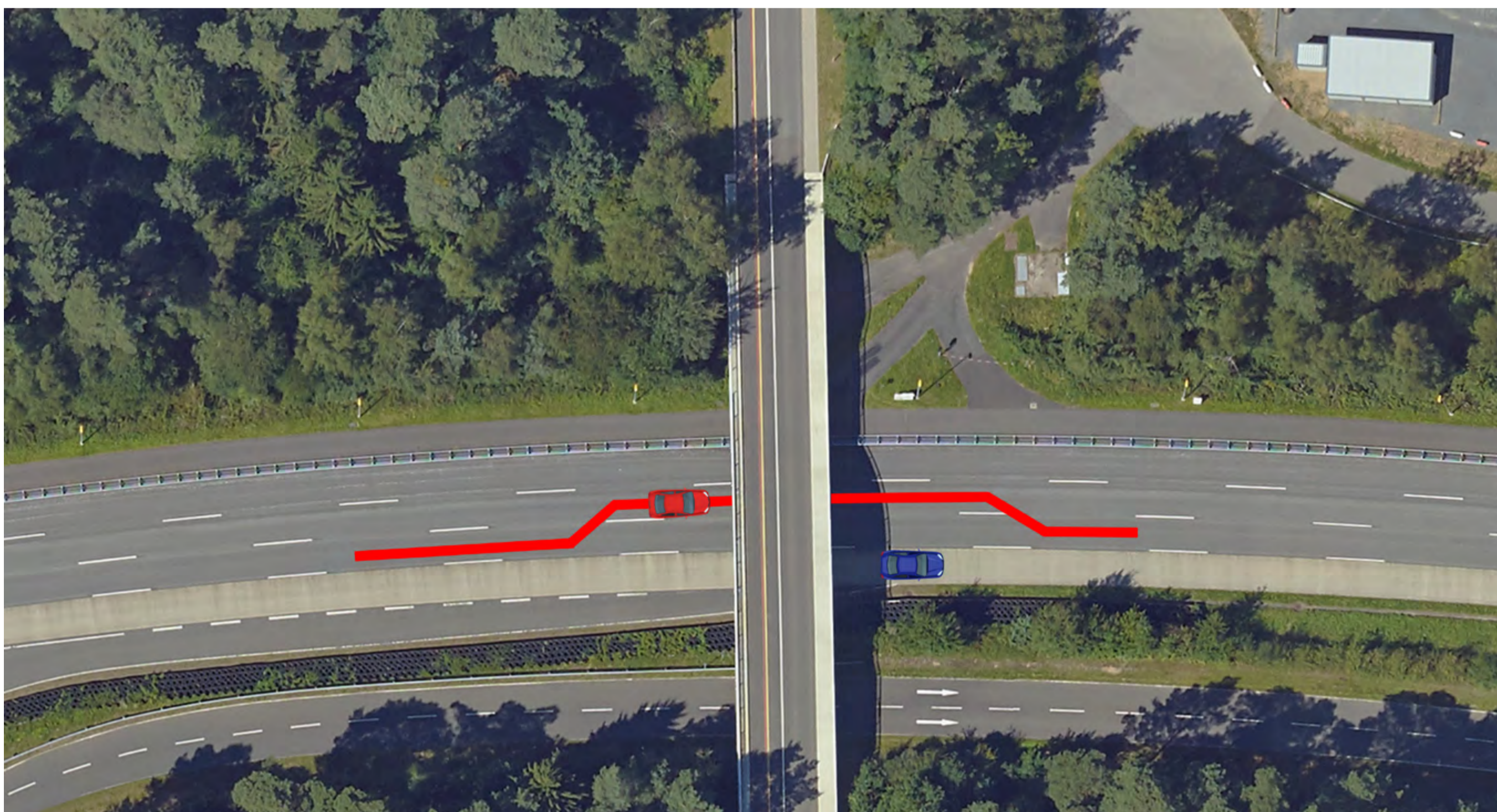
A TEST VEHICLE DEMONSTRATES AUTONOMOUS DRIVING ON A HIGHWAY

- You will be manually driven out of the Test Center and will manually reach the entry lane on B45 in direction of Obertshausen (North).

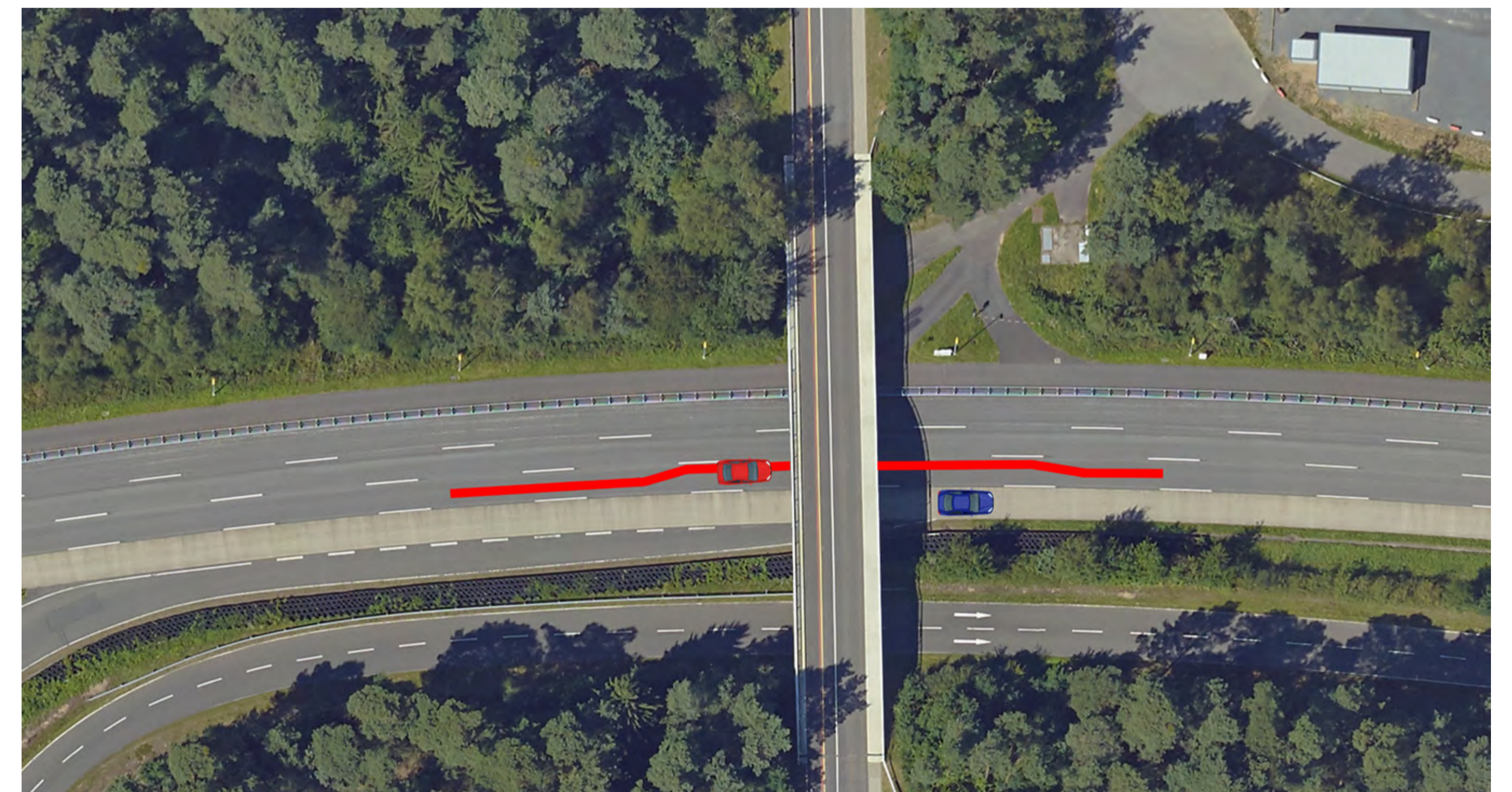


- Autonomous driving starts on the entry lane.
- The car finds its path in order to enter on the right most lane of B45.
- The car follows the route to Obertshausen without any human intervention except any driver's confirmation to change the lane.
- The safety server informs your car that a breakdown vehicle is on the shoulder lane (nearby a bridge).
- Your car will execute a lane change to lower the risk of any collision; if the traffic is too dense, your car will decelerate and shift a bit to the left whilst remaining on its lane.

light traffic

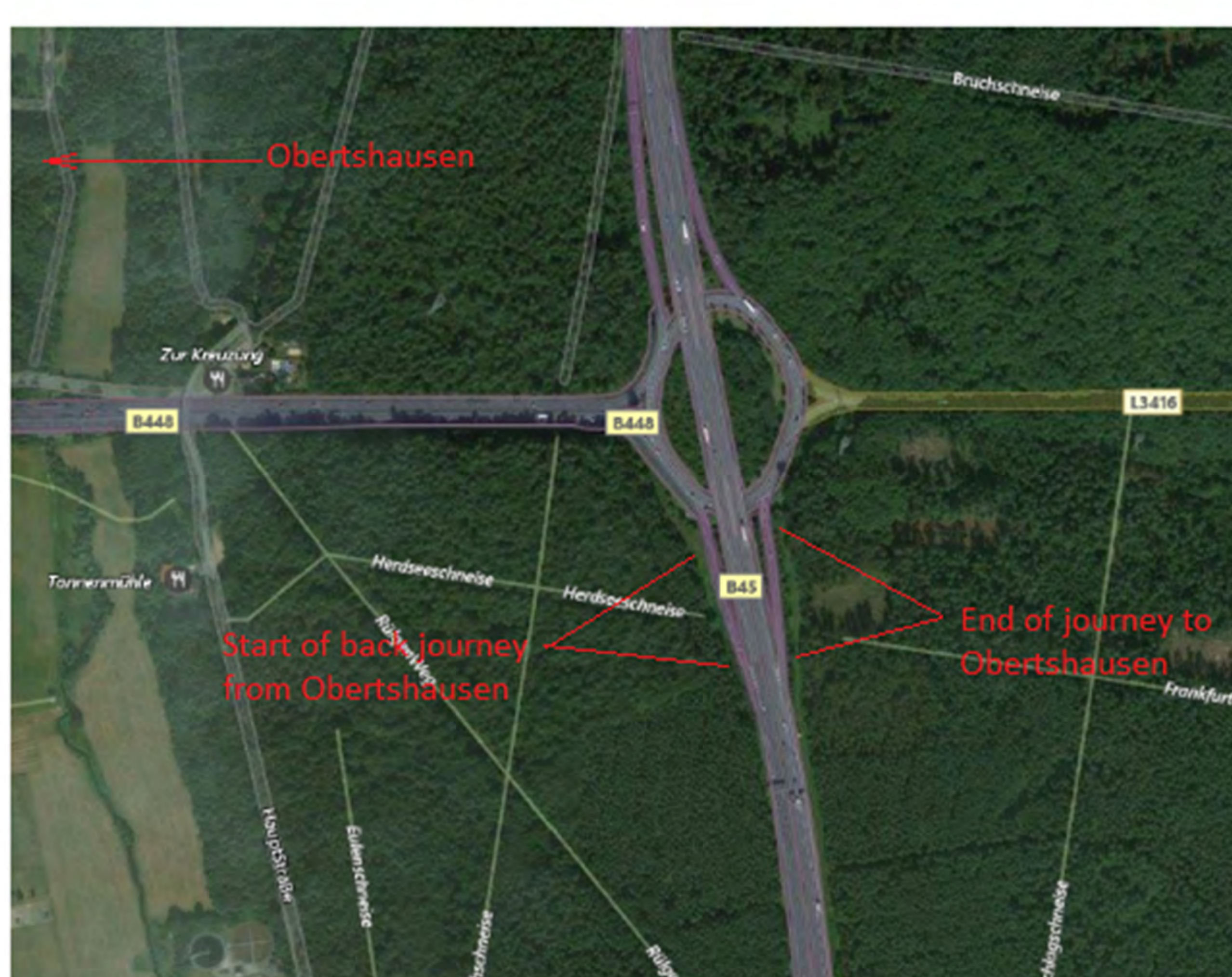


heavy traffic



1.) deceleration 2.) shift in lane

- The car will exit nearby Obertshausen and the driver will take over in order to drive back over a round about.



- The same scenario will be done on the way back to the test track.