



VALIDATION  
AND TEST

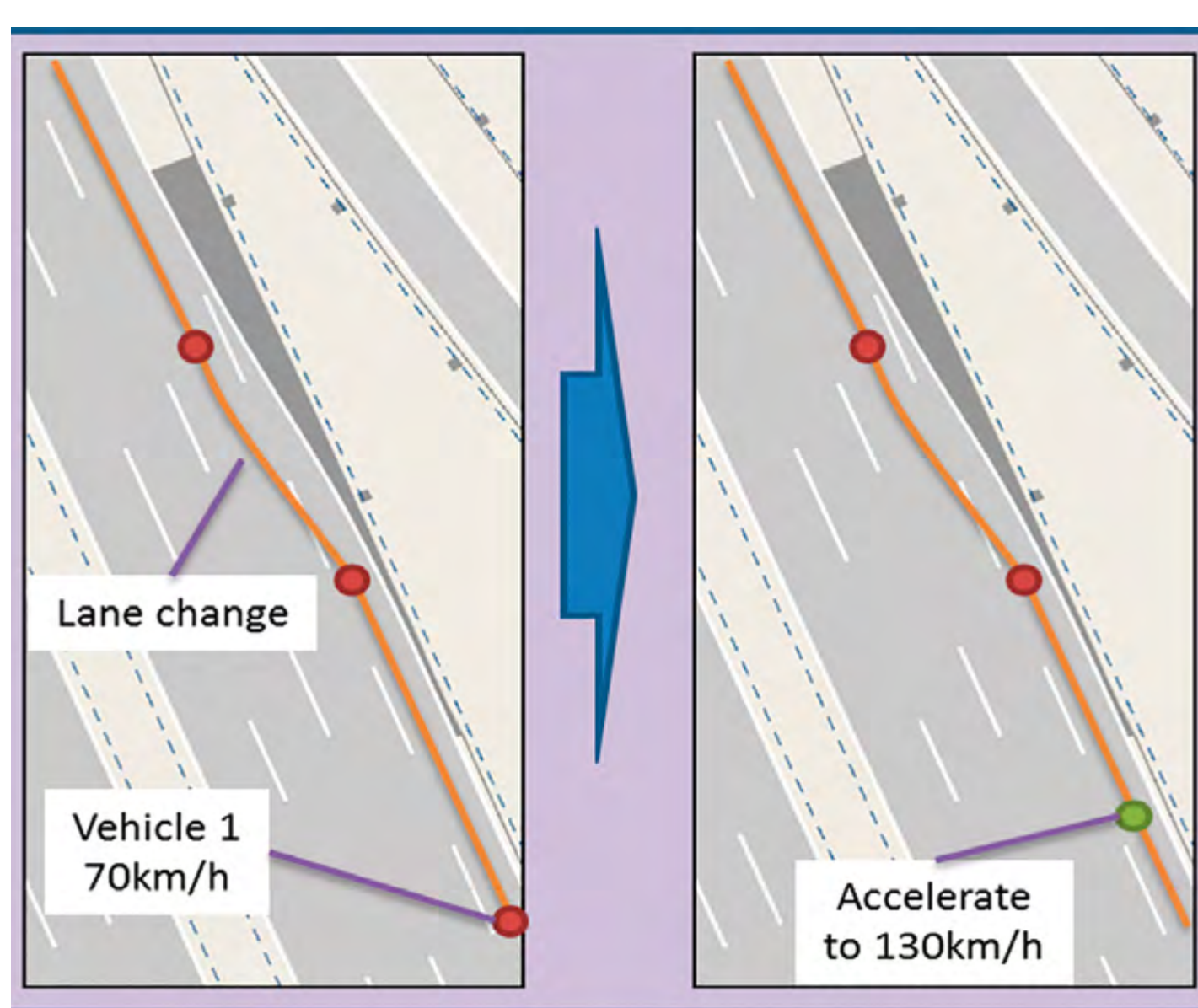
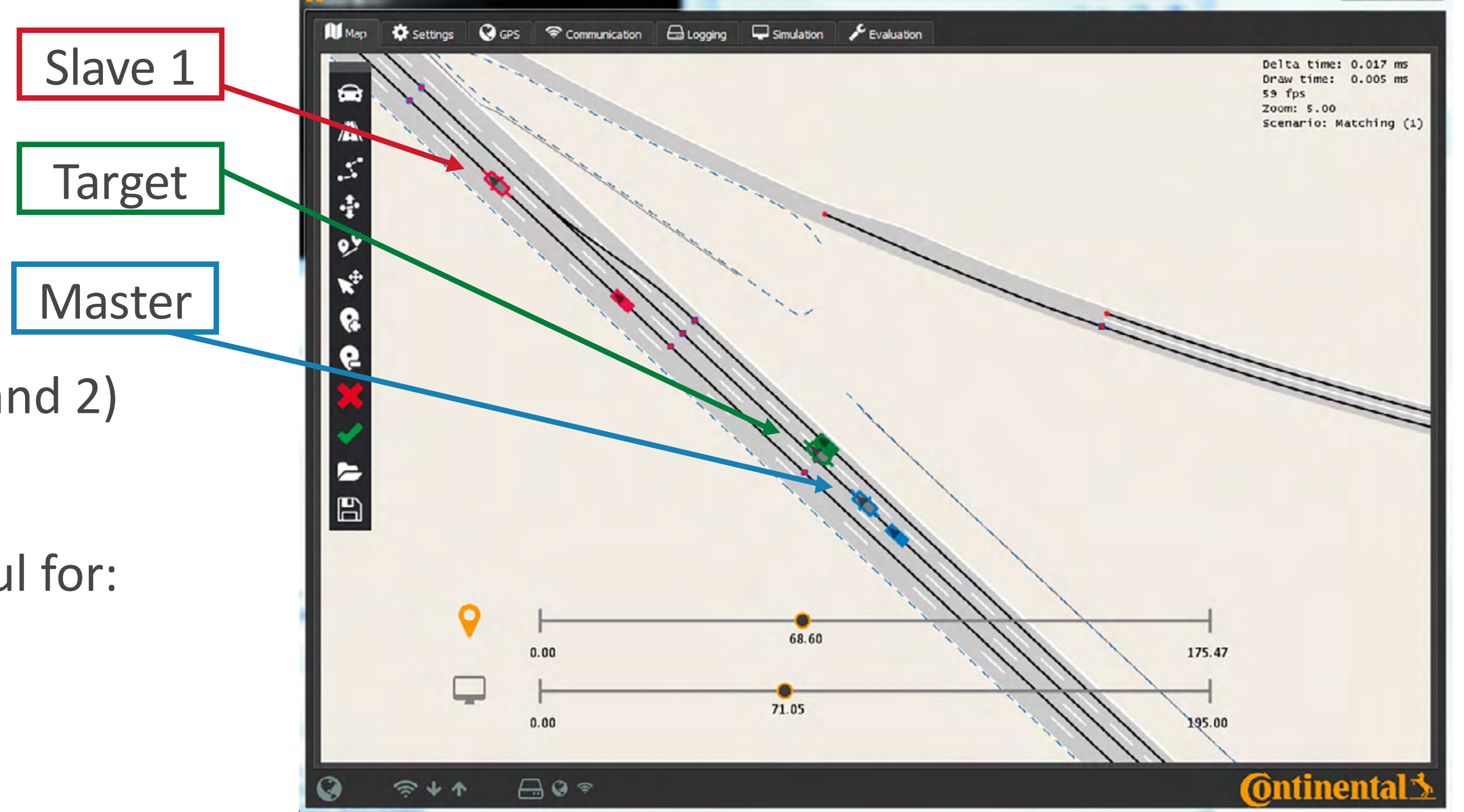
# TestAssist Coordination-Tool HAD-System Test

## GOAL

- The Tool is used in system tests with real vehicles.
- It coordinates all vehicles during the test case sequence.

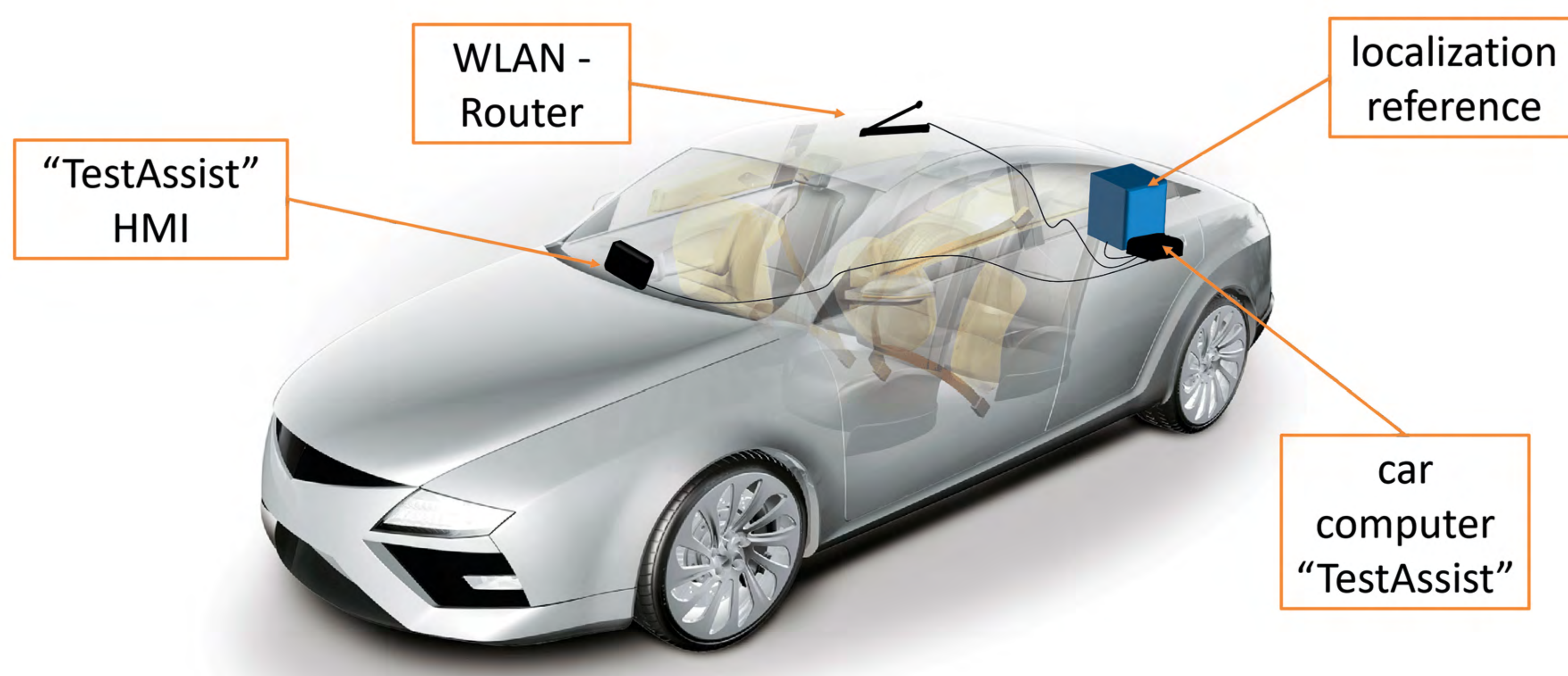
## SOFTWARE "TESTASSIST"

- Planning scenarios for each vehicle (Target, Master, Slave 1 and 2)
- A high accurate map is used (OpenDrive)
- Simulation of planned scenarios with moving vehicles - useful for:
  - Briefing test drivers
  - Optimizing the test case



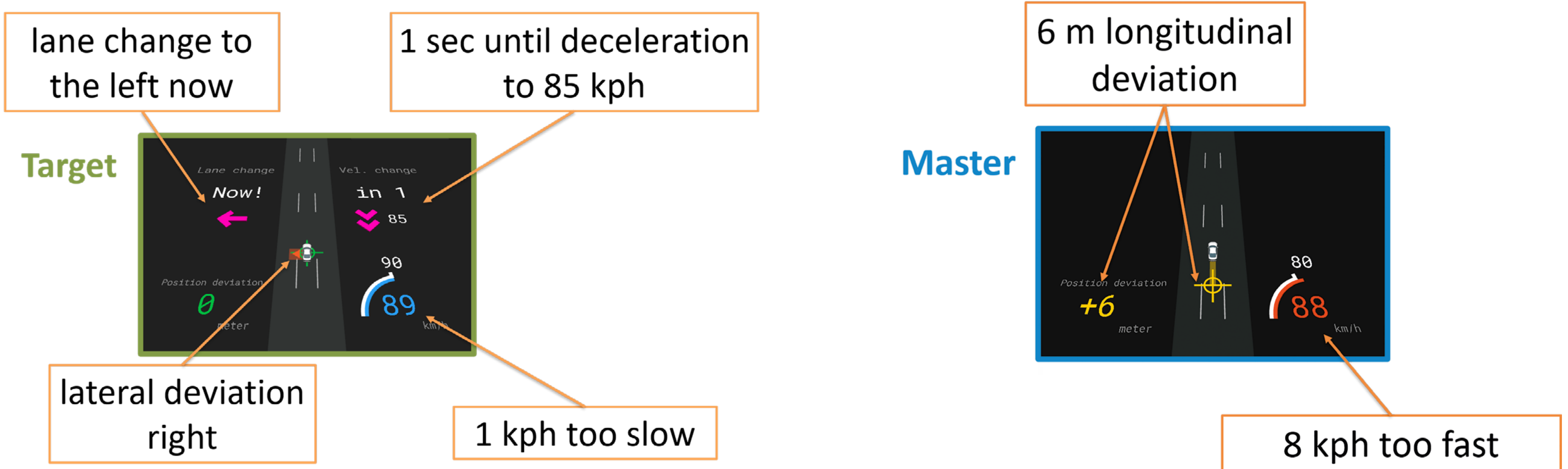
- Definition of the test case is saved in a "json" file
- Positioning & moving data from a test run are saved in a "Logging" file (10 to 20 ms time step)
- Replaying of test runs
- Comparison between real & planned test case

## HARDWARE



## „TESTASSIST“ HMI

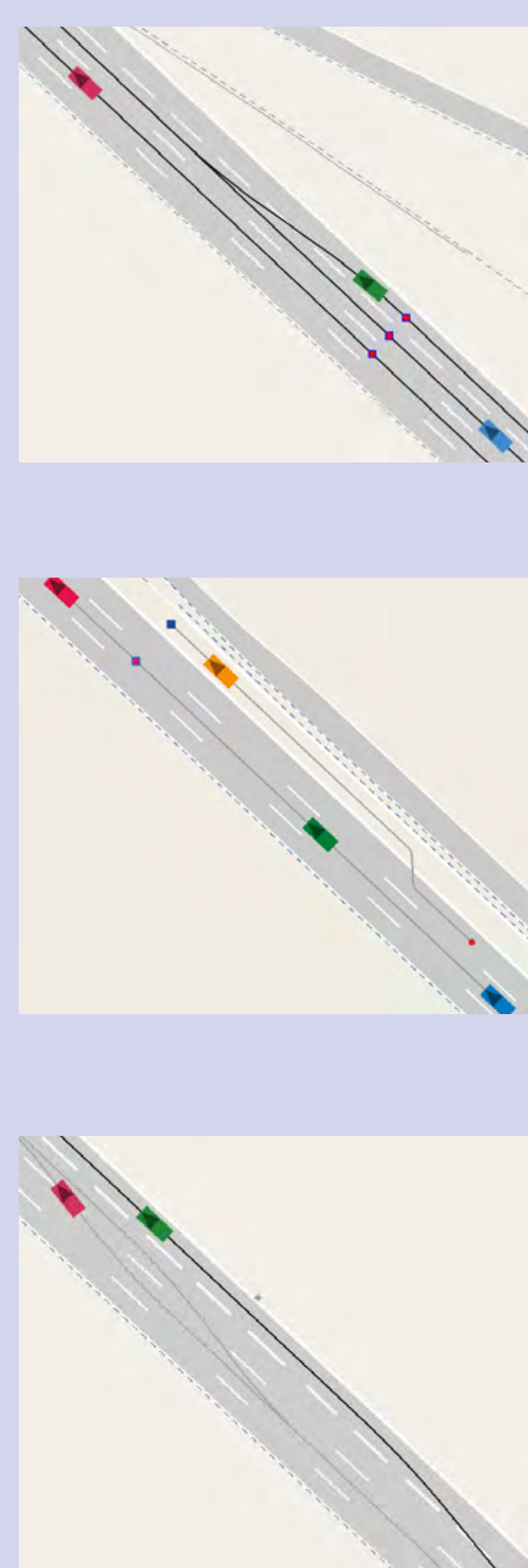
The HMI is a kind of navigation system for test drivers.



## DEMONSTRATION SEQUENCE

### First Round

- Starting with a ramp. The Target merges in front of the Master.
- Break down vehicle. Target & Master change to the left lane.
- Exit. Target leaves the straight, Master & Slave stay at the straight.



### Second Round

- Starting with a ramp. Target merges behind the Master.
- Break down vehicle. Target & Master change to the left lane.
- Master & Slave 1 accelerate to get distance between them & Target.
- Master & Slave 1 decelerate till they stand still ("Blockade").
- Restarting. First Position Target, then Master and at least Slave 1.

